

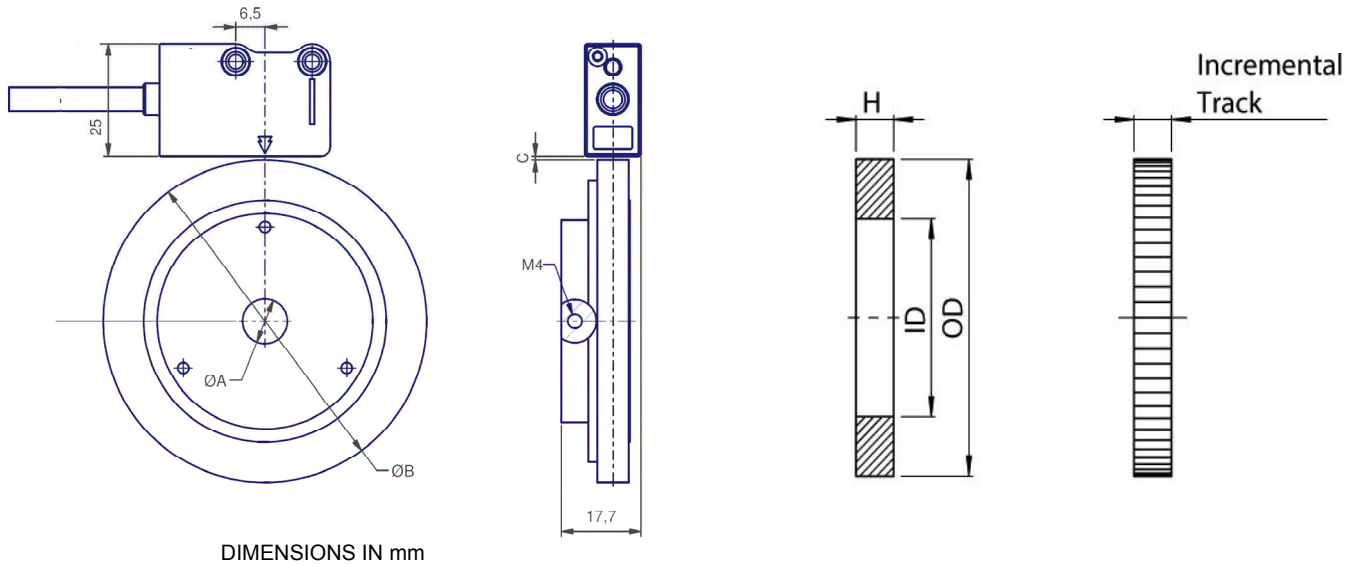
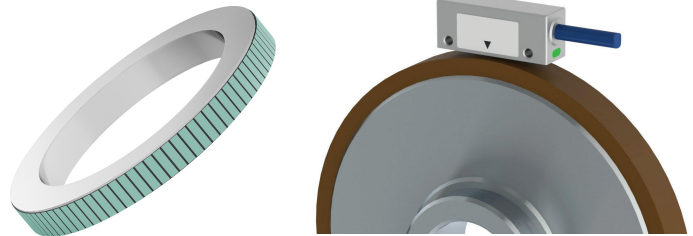
Code CST35	Project B22-D	Release R	TECHNICAL DATASHEET
----------------------	-------------------------	---------------------	----------------------------

MAGNETIC RING CR500 Series

GENERAL FEATURES

MAGNETIC RING CR500 made of magnetized ferrite ring with pole pitch of 5+5 mm. It is mounted on an aluminium flange for an easy application on the machine.

To be used with magnetic sensor
CSM 5xxxC



MECHANICAL CHARACTERISTICS

Pole pitch	5+5 mm			
System accuracy	$\phi 38$	$\phi 44.44$	$\phi 50.90$	$\phi 72$
	$\pm 0.21^\circ$	$\pm 0.16^\circ$	$\pm 0.11^\circ$	$\pm 0.11^\circ$
Measuring range	360°			
Operating temperature	0 °C + 70 °C			
Storage temperature	-20 °C + 80 °C			

ORDERING CODE

MODEL	POLE PITCH	EXTERNAL DIAMETER (B)	RING HEIGHT(A)	NUMBER OF POLES
CR	500	72	6.5	046

500 = 5+5 mm

38 = 38 mm
50.9 = 50.9 mm
72 = 72 mm

6.5 = $\phi 10$ standard
Others on request

024 = 24 poles ($\phi 38$)
030 = 32 poles ($\phi 50.9$)
046 = 46 poles ($\phi 72$)

Standard **MAGNETIC RING CR 500 38 6.5 024**

Code CST35	Project B22-D	Release R	TECHNICAL DATASHEET
----------------------	-------------------------	---------------------	----------------------------

DETAIL PARAMETERS OF THE MAGNETIC RING

order-no.	numbers of poles (Index)	mounting gap (C)	magnetic pole pitch	outer diameter (OD)	inner diameter (ID)	height (H)
		[mm]	[mm]	[mm]	[mm]	[mm]
51565	24	0.1~3	5	38	30,0	6,5
50536	28	0.1~3	5	44.44	38,52	3,0
51566	32	0.1~4	5	50,90	43,0	12
51560	46	0.1~3	5	72	53,9	7,0

INSTALLATION AND HANDLING

1. Fix the flange to the shaft with the dowel provided.
2. Align the magnetic sensor to the flange magnetic area.
3. Do not expose the ferrite ring to magnetic fields.