

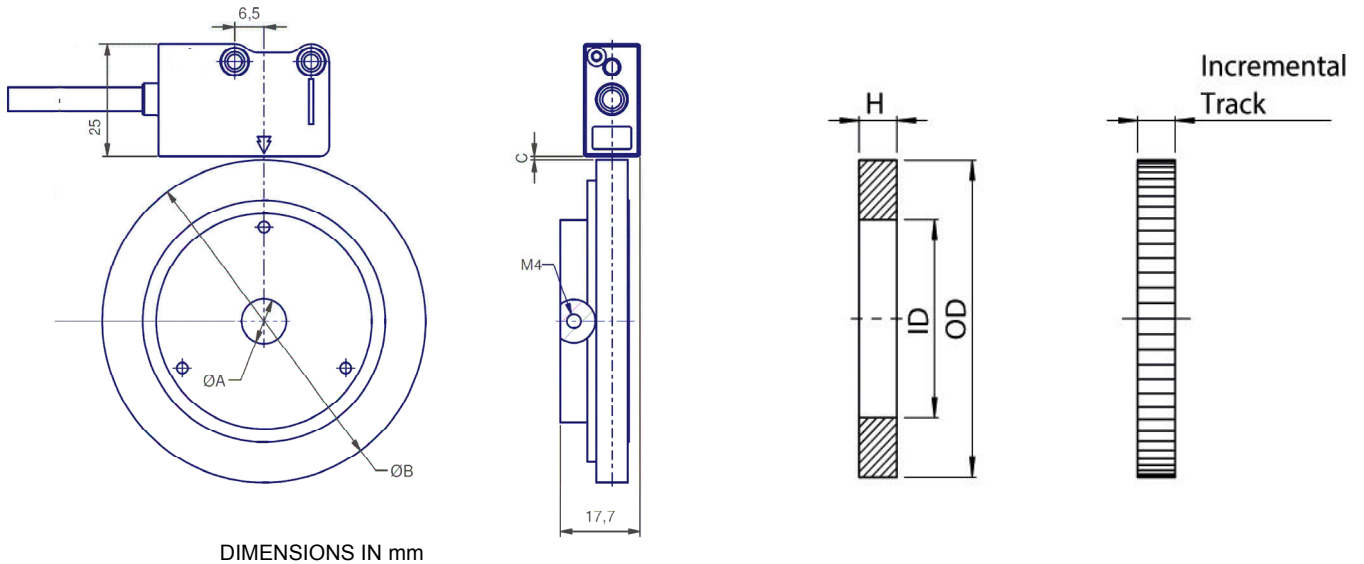
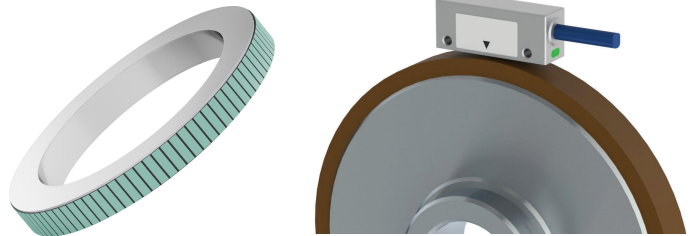
Code CST32	Project B22-D	Release K	TECHNICAL DATASHEET
----------------------	-------------------------	---------------------	----------------------------

MAGNETIC RING CR 200 Series

GENERAL FEATURES

MAGNETIC RING CR200 made of magnetized ferrite ring with pole pitch of 2+2 mm. It is mounted on an aluminium flange for an easy application on the machine.

To be used with magnetic sensor
CSM 5xxxC



MECHANICAL CHARACTERISTICS

Pole pitch	2+2 mm			
System accuracy	ø38	ø52.30	ø72.00	ø122
	± 0.09°	± 0.07°	± 0.05°	± 0.05°
Measuring range	360°			
Operating temperature	0 °C ÷ 70 °C			
Storage temperature	-20 °C ÷ 80 °C			

ORDERING CODE

MODEL	POLE PITCH	EXTERNAL DIAMETER (B)	RING HEIGHT(A)	NUMBER OF POLES
CR	200	72	6.5	060

200 = 2+2 mm

38 = 38 mm
52.3 = 52.3 mm
72 = 72 mm

6.5 = ø 10 standard
Others on request

024 = 60 poles (ø 38)
072 = 114 poles (ø 72)
122 = 192 poles (ø 122)

Standard **MAGNETIC RING CR 200 38 6.5 060**

Code CST32	Project B22-D	Release K	TECHNICAL DATASHEET
----------------------	-------------------------	---------------------	----------------------------

DETAIL PARAMETERS OF THE MAGNETIC RING

order-no.	numbers of poles (Index)	mounting gap (C)	magnetic pole pitch	outer diameter (OD)	inner diameter (ID)	height (H)
		[mm]	[mm]	[mm]	[mm]	[mm]
21565	60	0.1 ~1.0	2	38	30,0	6,5
20536	80	0.1 ~1.0	2	52.30	42,88	5,5
21566	114	0.1~1.0	2	72	53,9	7.0
21560	128	0.1 ~1.0	2	81.5	76,9	4,0
21588	192	0.1 ~1.0	2	122	118	4,0

INSTALLATION AND HANDLING

1. Fix the flange to the shaft with the dowel provided.
2. Align the magnetic sensor to the flange magnetic area.
3. Do not expose the ferrite ring to magnetic fields.